



A Textron Company

SHOPEZGO.COM

The Official Online Store For E-Z-GO Genuine Parts & Accessories

INSTALLATION INSTRUCTIONS

TITLE ELECTRIC BRAKE DRUM / HUB ASSEMBLY INSTALLATION DRAWING NO. 613339

REV -

NOTICE

Read all of the following instructions before attempting installation.

Tool List	Qty.	Tools Required	Qty.
Hydraulic Floor Jack	1	Jack Stands	4
Pliers	1	Socket 15/16"	1
Torque Wrench ft. lbs.	1	Plastic Tipped Hammer	1
Drum Puller	1	Chocks	4
Installation Items Required	Qty.		
Cotter Pin, 1/8" X 1 1/2" LG	1		

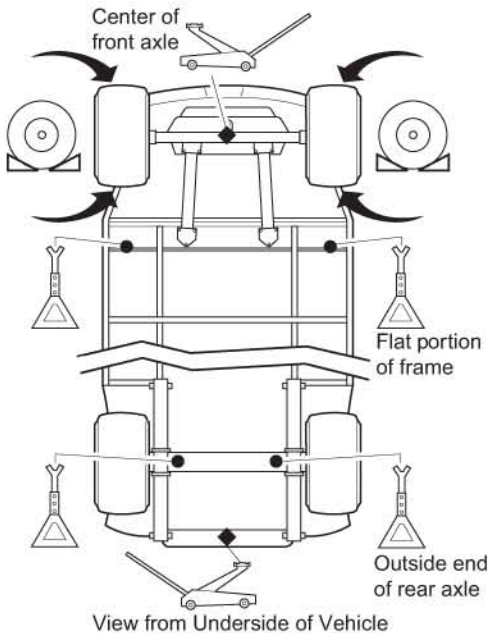
INSTALLATION INSTRUCTIONS FOR MPT 800 E PDS, ST SPORT II E, ST SPORT II E VPS, MPT 800 E, INDUSTRIAL 800 E

WARNING

To prevent possible injury or death resulting from a vehicle falling from a jack, be sure the vehicle is on a firm and level surface. Never get under a vehicle while it is supported by a jack. Use jack stands and test the stability of the vehicle on the stands. Always place chocks in front and behind the wheels not being raised. Use extreme care since the vehicle is extremely unstable during the lifting process.

CAUTION

When lifting the vehicle, position jack stands only in the areas indicated.



To raise the entire vehicle, install chocks in front and behind each front wheel. Center jack under the rear frame crossmember. Raise vehicle and locate a jack stand under outer ends of rear axle. Lower the jack and test the stability of the vehicle on the two jack stands. Place the jack at the center of the front axle. Raise the vehicle and position jack stands under the inner frame member as indicated. Lower the jack and test the stability of the vehicle on the four jack stands. If only the front or rear of the vehicle is to be raised, place the chocks in front and behind each wheel not being raised in order to stabilize the vehicle. Lower the vehicle by reversing the lifting sequence.

1. Park the vehicle on level ground.
2. Turn key to the "OFF" position and remove it from the switch. Make sure the parking brake is set.
3. To remove the Brake Drum, we need to lift the vehicle. Follow the instructions mentioned above to lift the vehicle.



A Textron Company

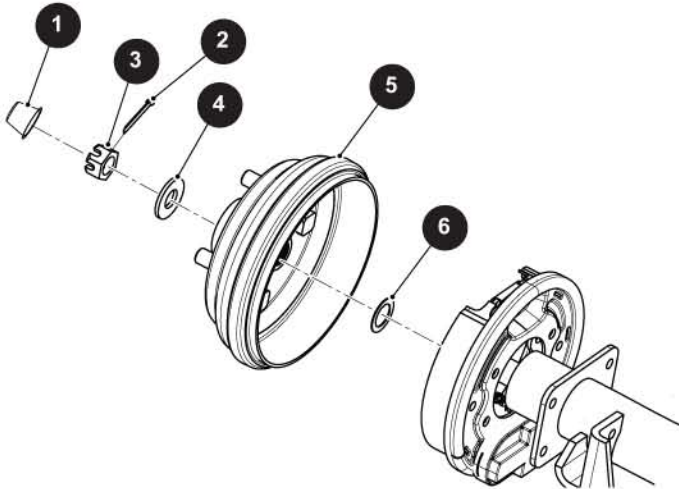
SHOPEZGO.COM

The Official Online Store For E-Z-GO Genuine Parts & Accessories

INSTALLATION INSTRUCTIONS

TITLE **ELECTRIC BRAKE DRUM / HUB ASSEMBLY INSTALLATION** DRAWING NO. **613339**

REV -



NOTICE

Pay particular attention to the location of the inner brake drum washer (6) inside the brake drum, which may be on the axle shaft or attached to the rear of the drum hub. This washer must be reinstalled when the brake is reassembled.

4. Remove the dust cap (1). Retain it to installation of Brake Drum (5) assembly later.
5. Remove the Cotter pin (2), castellated nut (3) and washer (4). Retain them for installation later.
6. Slide and remove the Brake Drum (5) from the axle shaft. If required, tap the drum with a plastic faced hammer. If the Brake drum is still not coming use drum puller and remove it.
7. If the brake drum does not slide from the brake assembly, the brake shoes must be retracted. Rotate the hub so that the hole in the drum is in the six o'clock position which is directly over the brake mechanism.
8. Remove the inner brake drum washer (6). Retain it for installation later.
9. Before installing Brake drum clean the axle shaft and apply a small amount of anti-seize compound to the axle spline.
10. Install the inner brake drum washer (6) and slide the new Brake drum assembly (5) into place.
11. Check to ensure the nose of drum hub is beyond the end of the axle splines. If not, remove the brake drum (5) and install one additional inner brake drum washer (6) to obtain the required spacing.



CAUTION

Do not back off nut to install cotter pin.

12. Install the remaining hardware and tighten the nut to 80 - 90 ft. lbs. torque. Continue to tighten until a new cotter pin can be installed through the castellated nut and the hole in the axle. Maximum torque is 140 ft. lbs.
13. Reinstall the dust cap (1).